



FIND YOUR HoW

G ♡
O ♡
F ♡
A ♡
R ♡



**We are a vocational
and technical
specialist college
based across
Worcestershire.**

**We have campuses
in Bromsgrove,
Malvern, Redditch
and Worcester.**



G 
O 
F 
A 
R 



What do you mean by 'Vocational Specialists'?

- Vocational courses are an alternative to A-levels
- Vocational means you learn work based skills, both professional and practical, geared towards a certain profession or career
- Specialise within your chosen field; from Marketing to Finance, Plastering to Plumbing or Childcare to Catering



Level 3 courses are the same academic level as A-levels



Level 3 courses are 2 years long (the same as A-levels)

Vocational Courses vs A-Levels

G
O
F
A
R

QUICK COMPARISON GUIDE

	A-LEVELS	VOCATIONAL
TAKE A MINIMUM OF THREE SUBJECTS	✓	
SPECIALISE IN ONE SUBJECT AREA		✓
CLASSROOM BASED STUDY	✓	
MIXTURE OF CLASSROOM BASED STUDY AND PRACTICAL APPLICATION		✓
CAN APPLY TO UNIVERSITY	✓	✓
CAN APPLY TO AN APPRENTICESHIP	✓	✓
ENGLISH AND MATHS	✓	✓
EXAMS AND ASSESSMENTS	✓	✓



Level Up Go Far

No matter what your current level of qualification is, we have a path suitable for you. Continue to climb with us and reach your full potential.



No Formal Entry Qualifications Entry Level Courses

Equivalent to:

Independent Living Skills
and Skills for Work

Mainly GCSE Grades E (2)

Level 1 Courses

Equivalent to:

Level 1 Diplomas
Skills for Work 2
Support into Employment

4 GCSEs Grades A*-D (9-3) Including English and maths

Level 2 Courses

Equivalent to:

GCSEs
Level 2 Diplomas
Apprenticeships

5 GCSEs Grades A*-C (9-4) Including English and maths

Level 3 Courses

Equivalent to:

A-Levels
Extended Diplomas
Advanced
Apprenticeships
Access to Higher Education Courses

Between 60-240 UCAS Points

Level 4/5 Courses

Equivalent to:

HNCs
HNDs
Foundation Degrees

Level 6+ Courses

Equivalent to:

Degrees
Masters
Other Professional Qualifications

If you don't achieve a 4 in English and maths you can either resit alongside starting your course or complete a functional skills programme.



ENTRY REQUIREMENTS

LETS GOOO



No formal entry requirements



4 GCSEs 9-3 (A*-D) to include English and maths



5 GCSEs 9-4 (A*-C) to include English and maths

You don't have to have studied the subject at GCSE to be accepted on to our courses. However, any background knowledge you have of the subject will be advantageous to your studies at college.

In some subject areas you will need to start at a level 1 to gain the technical knowledge and skills required to progress.



ENGLISH & MATHS



It is a government requirement that all students must have a grade 4 (C) or above in English and maths.

Achieved Grade 3 (D)



GCSE RESIT

Below Grade 3 (D)



FUNCTIONAL SKILLS

Our supportive and talented tutors will help students prepare for these qualifications ensuring they reach their full potential.



What we Offer in Worcester and Malvern

Art and Design

Automotive

Business

Childcare

Computing and IT

Construction (Malvern)

Engineering

Hair, Beauty and
Media Make-up

Health and Social Care

Hospitality and
Catering

Inclusive Learning

Performing Arts

Public Services

Sport

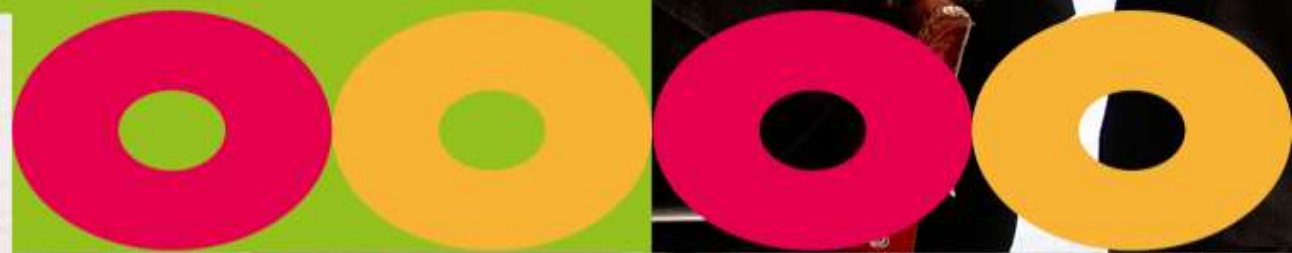
Travel and Tourism

G
O
F
A
R



Facilities: Worcester/Malvern

- Air Cabin
- Travel Agency
- Hospitality Kitchens
- Construction Centre
- Hair and Beauty Salons
- Engineering Workshops
- Art Studios
- Automotive Centre
- Theatre/Dance Studio
- Music Studios
- CODE
- Duckworth Centre of Engineering



Perdiswell Leisure Centre Sports Facilities

Our sports complex at Perdiswell Leisure Centre provides students with access to state-of-the-art facilities including fitness studios, football pitches and bespoke teaching classrooms. Students will have opportunities to undertake work placements with Freedom Leisure enabling them to develop their skills ready for employment in the sports and leisure industry.



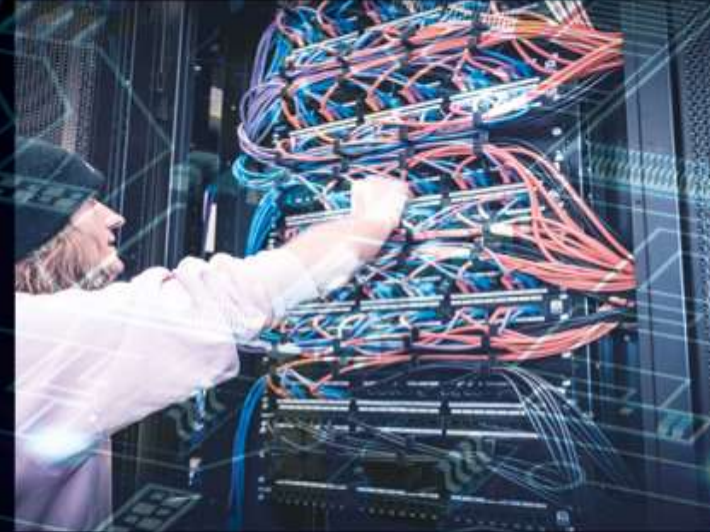
Duckworth Centre of Engineering

Introducing our new Duckworth Centre of Engineering, the training centre for the College's automotive, plumbing & heating engineering students and apprentices.

The 15,000 square foot unit has been fitted out with mezzanine flooring and specialist workshops and classrooms.

G
O
F
A
R





Our Centre of Digital Engineering (CODE) houses our Computing (Network Engineering and Software Development), Game Design, eSports and Media Design courses in Bromsgrove and Worcester.

Working in partnership with



Worcestershire
Local Enterprise Partnership

FACILITIES INCLUDE:

Virtual Reality Studio, equipped with both virtual (VR) and augmented (AR) reality headsets.

A Data Centre supported by the College's partner, Simply Hosting, giving students access to equipment used to build commercial networks.

Case Study

Jessica studied our Level 3 Beauty Therapy course and was a 'shore' success as she secured her first job, after attending a talk organised by the College, as a Beauty Therapist with cruise company, Steiner.



The College provides amazing facilities; they have a commercial salon on-site which allows students to practice beauty treatments on their own clients.



Jessica
Mumford

Case Study

Level 3 Engineering student, Cory Welsh, has a bright future ahead of him as he successfully completes his Level 5 Certificate in Wireless Network Fundamentals, while completing an internship with telecommunications training experts, Ubi-Tech.



Having the opportunity to gain work experience within this sector, meeting new people and developing an understanding of telecommunications, in particular wireless network fundamentals, was great.



Cory
Welsh

Case Study

After successfully completing her Travel and Tourism course, Ellie Peters gained employment as Cabin Crew with British Airways.



I chose HoW College because of their great facilities such as their travel agency and on-site air cabin. I have always been more of a practical learner so the units worked really well for me as opposed to A-levels.



Ellie
Peters

Case Study

Li-Tailor successfully completed his Level 2 in Creative Media and BTEC Subsidiary Diploma in IT Level 3. He then went on to graduate from HoW College with a Distinction in his Higher National Diploma in 2019.

Not only has Li returned to HoW College as a lecturer he also works for an independent company, Game Dr, developing science education apps as well as offering games workshops.



During my four years of studying, I have grown not only academically but also with my confidence and self-awareness in professional environments. I feel if it wasn't for the support of the lecturers, I wouldn't have had this success.



Industry Placement

All of our courses include a work experience element which provides students with the opportunity to put their skills into practice.

We work with a number of local employers to source the most suitable placements for our students. Many of our students have gone on to achieve employment with companies following their placement.



G
O
F
A
R





HEART OF WORCESTERSHIRE COLLEGE

APPRENTICESHIPS



WHAT IS AN APPRENTICESHIP?

Apprenticeships combine qualifications with on the job training.

During an apprenticeship you will work alongside experienced staff and get paid to train.

An apprenticeship is an amazing way to get your foot in the door and kick-start your future career

WHY BECOME AN APPRENTICE?



EARN A SALARY

Apprentices are paid for their work. Earn a salary as well as working towards a nationally recognised qualification.



GET PAID FOR YOUR HOLIDAYS

Apprentices have standard employee benefits such as holiday pay and sick pay.



FAST-TRACK YOUR CAREER

Move up the career ladder quicker than university graduates with job experience and a qualification to match.

APPRENTICESHIP SUBJECT AREAS

- Accountancy
- Business Administration
- Construction Technologies
- Customer Services
- Early Years
- Engineering, Manufacturing and Logistics
- Hair and Beauty
- Hospitality and Catering
- Leadership & Management
- Sales
- Vehicle Maintenance and Repair

LEVELS OF APPRENTICESHIPS

INTERMEDIATE APPRENTICESHIP

Qualification Level: 2
Equivalent to: GCSE

ADVANCED APPRENTICESHIP

Qualification Level: 3
Equivalent to: A level

HIGHER APPRENTICESHIP

Qualification Level: 4,5,6 and 7
Equivalent to: Foundation degree
and above

DEGREE APPRENTICESHIP

Qualification Level: 6 and 7
Equivalent to: Bachelor's or
master's degree



LAUREN DOWSON

Lauren Dowson successfully completed the Level 2 Intermediate Apprenticeship in Hairdressing at Redditch based salon, Legends Hair & Beauty, after deciding she wanted to get to grips with the client-facing industry of working directly in a hair salon.



THE APPRENTICESHIP TAUGHT ME HOW TO INTERACT WITH A VARIETY OF CLIENTS, FROM ALL AGES. IT WAS GREAT TO LEARN THE SKILLS AND TECHNIQUES BOTH IN A COMMERCIAL SALON AS WELL AS AT COLLEGE.





T-LEVELS

THE NEXT LEVEL QUALIFICATION



WHAT ARE T-LEVELS?

- T Levels are 2-year courses which are taken after GCSEs and are equivalent to 3 A Levels or a Level 3 Diploma.
- These courses have been developed in collaboration with employers and education providers to meet industry needs
- T Levels offer students practical and knowledge-based learning at a school or college and on-the-job experience through an industry placement with a relevant employer



**STEP UP
TO THE
NEXT LEVEL**

T-LEVELS

THE NEXT LEVEL QUALIFICATION

STARTING IN SEPT 2024 WE'LL ALSO BE RUNNING:

- Health & Science
- Health
- Engineering and manufacturing

WE CURRENTLY OFFER THE FOLLOWING T LEVELS:

- Education and Early Years
- Digital Production, Design and Development
- Digital Support Services

T-LEVELS

THE NEXT LEVEL QUALIFICATION



ENTRY REQUIREMENTS

You must have 5 GCSEs grades 4 and above and they must include Maths and English.

If you don't get these grades, we offer a number of other courses that may be more suitable including Level 2 programmes that can progress to T Levels.



T-LEVELS

THE NEXT LEVEL QUALIFICATION

WHAT KIND OF THINGS WILL I LEARN?

You'll learn lots of skills and knowledge relevant to your subject area.

During your industry placement you will develop transferable technical and practical skills in:

- Communication
- Research
- Project work

You will develop professional skills for industry as well as skills you will need for the future including:

- Personal
- Social
- Employability skills



T-LEVELS

THE NEXT LEVEL QUALIFICATION

HOW WILL I BE ASSESSED?

Assessment takes place by a range of methods including external exams and assessments.

PROGRESSION OPPORTUNITIES

T Levels will provide several progression options to students. These include skilled employment, an apprenticeship and higher education.

HOW DO I APPLY FOR A T LEVEL?

You apply in the same way you would for a typical college programme – with HoW College this is via our website

General day in the life

Practical Day

- Start the day with a practical lesson.
- During the lesson practical sessions will be carried out, these will take place in our workshops/ state of the art facilities.
- Pack up just before lunch.
- Go for lunch – this can be spent in the canteen, in town or in the SUB.
- After lunch, those that are retaking maths or English have their lesson, others either have an additional lesson or extra learning time.
- End the day with Elements.



G
O
F
A
R

General day in the life

Theory Day

- Start the day with a theory lesson where you will do written work.
- A short break – can be spent in the SUB or canteen.
- Straight into a longer practical lesson – this will be done in workshops/ facilities.
- Clear down, end of the day.



General day in the life

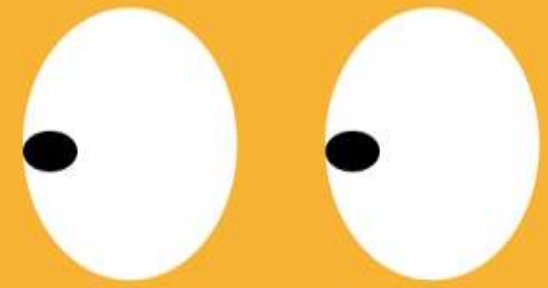
Tutorial day and those taking maths and English

- Start the day with an English lesson – those that aren't taking English will have an alternative lesson.
- Then a double tutorial (lessons with personal tutor).
- First lesson will be more of a 1-1.
- Then the second lesson will be more classroom based as a group.
- After lunch there will be a maths lesson (an alternative for those not retaking maths).
- Finish the day with an Elements session.



G ♥
O ♥
F ♥
A ♥
R ♥

STUDENT EXPERIENCE



HEART OF WORCESTERSHIRE COLLEGE

SU
STUDENT UNION

WE HAVE A STUDENT
AMBASSADORS ON
EACH CAMPUS

SUB

SUB ON ALL
CAMPUSES



WE HAVE CANTEENS
ON EACH OF OUR
CAMPUSES



FREE WIFI ON ALL
CAMPUSES



Various campaigns run within College throughout the year, including;
Mental Health Awareness Week, LGBT+ History Month, Fearless Females, Magnificent Males, Black History Month and many more.

Careers

- Impartial
- Free
- Matrix accredited

They can help with:

- CV writing
- UCAS applications
- Job interviews
- One-to-one career appointments

Personal Tutors

When you start at college you will be assigned a Personal Tutor.

They set you targets and learning plans that aim to not only stretch and challenge you, but to also ensure that you reach your full potential during your time at college.



Welfare

Our welfare team are a single point of access for any student experiencing difficulties or concerns relating to general health, wellbeing and mental health issues.

Specialist Learning Support

Our Specialist Learning Support team consists of Personal Learning Coaches (PLCs) who work with students that require additional support to complete their studies.

G
O
F
A
R



YOU
CAN
DO IT





Further Education Learner Support Fund

Supporting you with all aspects of college life from equipment, uniform and trip costs, to meals and childcare.

Limits

16+ £ **AGE INCOME**

Free Travel

Helping you to get to and from college. If you qualify we will pay for your bus/train pass.

Limits

16-19 £ **AGE INCOME**



Advanced Learner Loans (All)

Support aimed at those aged over 19 to help with course fees.

Limits

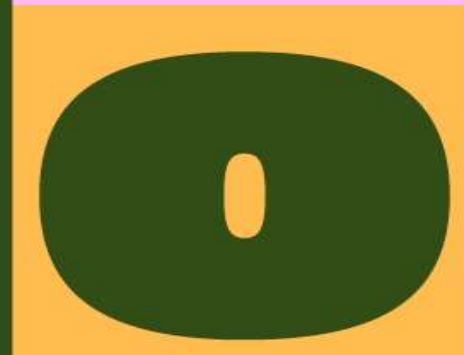
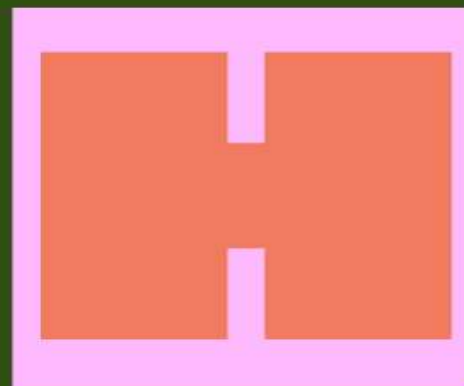
19+  **AGE COURSE LEVEL**

Free College Meals

Fuel yourself and be ready to learn with our free college meals scheme.

Limits

16+ £ **AGE INCOME**



G 
O 
F 
A 
R 

360 Tours and Virtual Talks Available Online

360 Tours

We have 360 tours on our website, allowing you to relax, kick back and take a look around our campuses from the comfort of your own home!



G
O
F
A
R





You're just five simple steps away from starting your college journey.



1* Look

Take a look through our prospectus and website to find the right course for you.

2* Attend

Come to one of our open events, talk to our lecturers and students and find out how we can help you achieve your full potential.

3* Apply

Apply online via our website at howcollege.ac.uk

4* Interview

Once we have received your application you will be invited to attend an interview. You will be advised at the end of your interview if you have been successful.

5* Offer

If successful you will be invited to an enrolment session, normally held before the summer holidays. You must attend to confirm your place.

VISIT AN OPEN DAY

Open Events

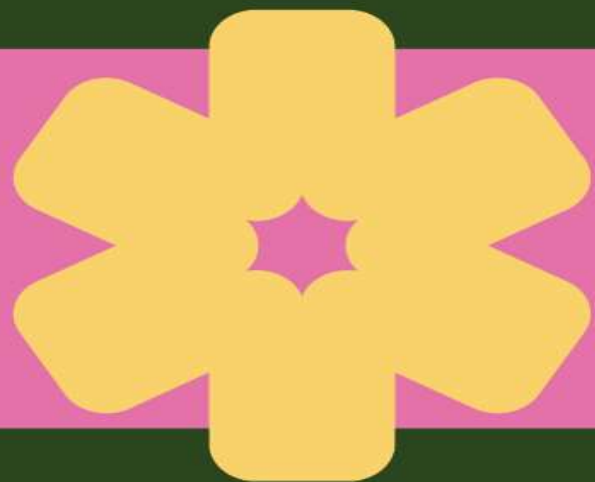
Saturday
21st October 2023
11am till 2pm
All Campuses

Saturday
3rd February 2024
11am till 2pm
All Campuses

Taster Sessions

Saturday
20th April 2024
10am till 1pm
All Campuses

G
O
F
A
R





HOWCOLLEGE.AC.UK

AMY
AMY
AMY
QUESTIONS?
QUESTIONS?
QUESTIONS?
QUESTIONS?
QUESTIONS?